



Results of Liver Transplantation for Hepatocellular Carcinoma in a Multicenter Latin American Cohort Study

Federico Piñero,¹ Paulo Costa,² Yuri L. Boteon,³ Sergio Hoyos Duque,⁴ Sebastian Marciano,⁵ Margarita Anders,⁶ Adriana Varón,⁷ Alina Zerega,⁸ Jaime Poniachik,⁹ Alejandro Soza,¹⁰ Martín Padilla Machaca,¹¹ Josemaría Menéndez,¹² Rodrigo Zapata,^{13,14} Mario Vilatoba,¹⁵ Linda Muñoz,¹⁷ Martín Maraschio,¹⁷ Martín Fauda,¹ Lucas McCormack,⁶ Adrian Gadano,⁵ Ilka SF Boin,³ Jose H. Parente García,² Marcelo Silva¹
On behalf of the Latin American Liver Research, Education and Awareness Network (LALREAN).

¹ Hospital Universitario Austral. Austral University, Faculty of Medicine. Argentina.

² Hospital Federal University of Ceará, Brazil.

³ Hospital de Clínicas, State University of Campinas, Brazil.

⁴ Hospital Pablo Tobón Uribe and Gastroenterology group from Universidad de Antioquía, Medellín, Colombia.

⁵ Hospital Italiano from Buenos Aires, Argentina.

⁶ Hospital Alemán, Argentina.

⁷ Fundación Cardioinfantil, Instituto de Cardiología, Bogotá, Colombia.

⁸ Sanatorio Allende from Córdoba, Argentina.

⁹ Hospital Clínico Universidad de Chile.

¹⁰ Hospital Universidad Católica de Chile.

¹¹ Hospital Guillermo Almenara, Perú.

¹² Hospital Militar-Clínicas, Uruguay.

¹³ Clínica Alemana de Santiago, Universidad del Desarrollo, Chile.

¹⁴ Hospital del Salvador, Universidad de Chile, Chile.

¹⁵ Instituto de Ciencias Médicas, Mexico.

¹⁶ Hospital Universitario de Monterrey, Mexico.

¹⁷ Hospital Privado from Córdoba, Argentina.

ABSTRACT

Background and aims. Heterogeneous data has been reported regarding liver transplantation (LT) for hepatocellular carcinoma (HCC) in Latin America. We aimed to describe treatment during waiting list, survival and recurrence of HCC after LT in a multicenter study from Latin America. **Material and methods.** Patients with HCC diagnosed prior to transplant (cHCC) and incidentally found in the explanted liver (iHCC) were included. Imaging-explanted features were compared in cHCC (non-discordant if pre and post-LT were within Milan, discordant if pre-LT was within and post-LT exceeding Milan). **Results.** Overall, 435 patients with cHCC and 92 with iHCC were included. At listing, 81% and 91% of cHCC patients were within Milan and San Francisco criteria (UCSF), respectively. Five-year survival and recurrence rates for cHCC within Milan, exceeding Milan/within UCSF and beyond UCSF were 71% and 16%; 66% and 26%; 46% and 55%, respectively. Locoregional treatment prior to LT was performed in 39% of cHCC within Milan, in 53% beyond Milan/within UCSF and in 83% exceeding UCSF ($p < 0.0001$). This treatment difference was not observed according to AFP values (≤ 100 , 44%; 101-1,000, 39%, and $> 1,000$ ng/mL 64%; $p = 0.12$). Discordant imaging-explanted data was observed in 29% of cHCC, showing lower survival HR 2.02 (CI 1.29; 3.15) and higher recurrence rates HR 2.34 when compared to AFP < 100 ng/mL. Serum AFP $> 1,000$ ng/mL at listing was independently associated with a higher 5-year recurrence rate and a HR of 3.24 when compared to AFP < 100 ng/mL. **Conclusion.** Although overall results are comparable to other regions worldwide, pre-LT treatment not only considering imaging data but also AFP values should be contemplated during the next years.

Key words. Liver cancer. Prediction. Candidate selection.

INTRODUCTION

Recent data from liver transplant centers in Europe and the United States have shown that approximately 20-30% of all liver transplants (LT) are performed for hepatocellular carcinoma (HCC).^{1,2} The Milan criteria were published 20 years ago and have been established as standard selection criteria for LT.³ However, other extended criteria have challenged the Milan criteria over the past years, including imaging data⁴ or combination of imaging and molecular markers.^{5,6}

Currently, there are actually 13 countries in Latin America with Liver Transplant programs.⁷ More than 2,500 liver transplants are performed each year in this region, with a deceased donation rate of 8.3 per million population.⁷ Heterogeneous data has been reported to date related to LT for HCC in Latin America. Single or multicenter center experience have been published from different countries.⁸⁻¹⁷

With these isolated data, reporting a regional global measure for results of survival and recurrence at 5 years is still difficult. That is why we set this study at a regional level with the aim of describing selection criteria, treatment during waiting list and results in terms of survival and recurrence of hepatocellular carcinoma after liver transplantation in a multicenter study from Latin America.

MATERIAL AND METHODS

Study design, setting and participating centers

This study was conducted including a multicenter Latin American cohort of consecutive adult patients (> 17 years of age) who underwent a first LT between June 1 2005 and December 31 2011 in 17 different LT centers and were prospectively followed after transplantation. Participating centers appointed a study coordinator responsible for data collection. In cases of conflicting or missing data, central revision and resubmission were requested.

Eligibility criteria and study variables

Criteria for inclusion required patients to be adult cirrhotic or non-cirrhotic recipients with confirmed HCC in the explanted liver. Patients were excluded if other tumors than HCC were confirmed in the explanted liver.

Recipient characteristics, pre-transplant tumor characteristics and serum α -fetoprotein (AFP) levels were obtained at listing. Subjects with HCC diagnosis prior to transplant (cHCC) based on imaging criteria¹⁸ were classified according to Milan (MC)³ and University of California San Francisco criteria (UCSF),⁴ depending on size

and number of lesions detected on pre-LT computerized tomography (CT) or magnetic resonance images (MRI). Pre-transplant AFP levels were registered in parallel with imaging data at listing and the following cut-offs were considered: ≤ 100 ng/mL, 101-1,000 ng/mL, and $> 1,000$ ng/mL.⁵ Standard patient selection in all centers was limited to patients with tumors meeting MC. Transplantation for patients exceeding MC was discussed at each transplant center on a case-by-case basis. Site-specific organ allocation policies were also registered.

Tumor treatment before transplantation was recorded including trans-arterial chemoembolization (TACE), radiofrequency ablation (RFA), percutaneous ethanol injection (PEI) and liver resection. Among patients who received any local/regional tumor treatment prior to transplant, both last serum AFP and imaging results for restaging were also considered. In patients exceeding MC, downstaging was defined as reducing the tumor size specifically to meet MC.¹⁹

Pre-LT images (CT or MRI) were compared with explanted liver findings, including: macroscopic and microscopic evaluation of each nodule, number and diameter (cm) of each, presence of microvascular invasion (mvi), and degree of tumor differentiation according to Edmonson-Steiner grading system.²⁰ Finally, Milan and Up-to seven criteria²¹ were also applied to the explanted liver specimen. Patients with tumors discovered on final pathology without a preceding diagnosis were catalogued as incidental HCC (iHCC). If a patient had previously known HCC and more nodules were found in the explanted liver, these nodules were not categorized as iHCC.

Discordant imaging-explanted features were assessed and defined as non-discordant if a patient met imaging pre-LT Milan criteria at listing and remained within Milan criteria in the explanted liver; whereas discordant was defined as patients meeting Milan at listing and exceeding this criteria after explanted liver analysis. This latter analysis was done excluding iHCC.

Study end-points

Primary end-points analyzed were 5-year patient survival and HCC recurrence. All patients were followed-up until death or last outpatient visit. Post-transplant follow-up for HCC recurrence consisted of one CT or MRI, bone scintigraphy and serum AFP assay every 6 months, as recommended.²² Recurrence was determined on the basis of imaging criteria plus serum AFP or by biopsy. Time to recurrence (TTR) was considered a robust clinical outcome measure and calculated as the time in months elapsed between transplantation and diagnosis of recurrence.

All procedures followed were in accordance with STROBE guidelines.²³ This study was approved by the Austral University Hospital and School of Medicine and by each center ethics committee. It complied with the ethical standards (institutional and national) and with Helsinki Declaration of 1975, as revised in 2008. Patient free term consent was obtained from all subjects included.

Statistical analysis

Categorical data were compared using Fisher's exact test or Chi-Square (χ^2) test (2-tailed). Continuous variables were compared with Student's T test or Wilcoxon rank-sum test according to their distribution, respectively. A multivariate Cox regression analysis, with hazard ratios (HR) and 95% confidence intervals (95% CI) for identifying baseline pre and post-transplant risk variables for 5-year mortality and recurrence was carried out evaluating potential confounding variables. Clinical effect modifiers related to HCC recurrence were also evaluated including type of immunosuppression after LT. Dummies for ordinal or categorical variables were assessed. Variables with a P value < 0.05 after the univariate analysis were included in the multivariate model, generated by stepwise forward elimination evaluating P values (Wald test) and considering adjusted HR with confounding variables (> 20% of change in crude HR). Adjustment of each final model was evaluated with proportional hazards through graphic and statistical evaluation (Schoenfeld residual test). Calibration was assessed by comparison of observed and predicted curves and evaluation of the goodness of fit of the model by Harrell's c-statistic index. A competing risk analysis with death and recurrence was done with calculation of subhazard ratios (SHR) and 95% CI. Kaplan Meier survival curves were

compared using the log-rank test (Mantel-Cox). Collected data were analyzed with STATA 10.0.

RESULTS

Participating centers and patients characteristics

From a total of 2,761 consecutive adult LT patients in 17 different centers during the study period previously described, 435 patients with cHCC and 92 with iHCC were included (Figure 1). Percentage of patients contributed by participating LT centers per country was as follows: 2 from Brazil (n = 221, 41.9%), 5 transplant programs from Argentina (n = 136, 25.8%), 2 from Colombia (n = 77, 14.6%), 4 from Chile (n = 55, 10.4%), 2 from Mexico (n = 13, 2.5%), and 1 from Peru (n = 14, 2.7%) and Uruguay (n = 11, 2.1%). Patients within MC from Argentina, Brazil, Uruguay, Peru and Chile could receive additional MELD points while on the waiting list. Table 1 shows a description of the overall cohort. Subsequent analysis was considered excluding incidental HCC.

Staging and management of HCC before transplantation

Among patients with cHCC, median time on the wait-list was 3 (IQR 1-9 months); 58.6% (n = 309) were granted with supplementary MELD points. At listing, 81%

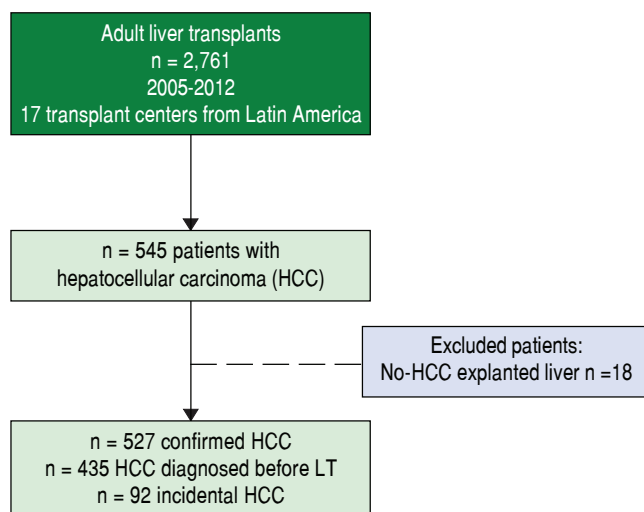


Figure 1. Inclusion and Exclusion Criteria flow chart.

Table 1. Patients' Baseline Characteristics.

Variable	Values
Age, years (\pm SD)	57 \pm 9
Gender, Male, n (%)	431 (81.8)
Median time on waiting list (IQR), months	2.0 (0.0-6.0)
MELD (\pm SD)*	16.7 \pm 7.7
Supplementary MELD points, n (%)	309 (58.6)
Non-cirrhotic liver, n (%)	7 (1.3)
Child Pugh A/B/C, n (%)	149 (28.6) / 227 (43.6) / 145 (27.8)
Etiology of liver disease, n (%)	
Hepatitis C virus	174 (33.0)
Hepatitis B virus	128 (24.3)
Hepatitis B and C virus	3 (0.6)
Alcohol	101 (19.2)
NASH	29 (5.5)
Cryptogenic	40 (7.6)
Cholestasis**	18 (3.4)
Autoimmune	13 (2.5)
Hemochromatosis	10 (1.9)
Miscellaneous	9 (1.7)
Living donor, n (%)	3 (0.6)

MELD: Model for End Stage Liver Disease. NASH: Non-Alcoholic Steatohepatitis. *Laboratory MELD score before liver transplant, **Cholestasis: primary biliary cholangitis, primary and secondary sclerosing cholangitis.

(n = 354) and 91% (n = 393) of the patients were within MC and UCSF criteria, respectively. Considering extended criteria, 9.2% of the patients were beyond MC/within UCSF (n = 40) and 9.4% (n = 41) were beyond UCSF criteria. Four patients had missing AFP values.

With respect to specific pre-LT images, among cHCC patients a CT alone was done in 58% of the cohort (n = 251), MRI alone in 27% (n = 117) and both CT/MRI in 15% (n = 66). A tumor biopsy for HCC diagnosis was performed in 8 patients (1.8%). In 315 cHCC patients, a last additional image evaluation was done with a CT alone in 63% (n = 199), an MRI alone in 35% (n = 111) and with both methods in 5 patients. Median time from last imaging evaluation to transplantation was 3 months (IQR 1-5 months).

Bridging therapies prior to transplantation were performed in 44.4% of patients with cHCC (n = 193). Of these, 71.5% (n = 138), 10.9% (n = 21) and 17.6% (n = 34) were within Milan, beyond Milan/within UCSF, and beyond UCSF at listing, respectively. Median time from last treatment to LT was 4.0 months (IQR 2.0-9.0 months) (Table 2). Among patients receiving local/regional treatments, 143 patients were restaged after bridging therapies.

At last evaluation 82% of the patients were within Milan, 8% were beyond Milan/within UCSF and 10% were beyond UCSF.

The clinical decision to perform a pre-transplant loco-regional treatment was largely assessed according to the diameter and number of nodules by imaging data and according to pre-LT selection criteria (Figure 2A). It was observed that pre-LT treatment was done incrementally when patients were within Milan 39%, beyond Milan/within UCSF 53% and exceeding UCSF 83% (P < 0.0001). On the other hand, this proportional increase was not observed when considering serum AFP values, particularly in the intermediate risk stratum of 101-1,000 ng/mL (Figure 2B).

Explanted liver tumor characteristics

Whereas increasing proportion of microvascular invasion was observed considering MC or extended criteria at listing (Figure 3A), pre-LT serum AFP cut-off values were also associated with increasing proportion of microvascular invasion and undifferentiated tumors (Figure 3B, Table 3).

Table 2. Comparative analysis according to locoregional treatment before liver transplantation.

Variable	Treatment n = 193 (44.4%)	No Treatment n = 242 (55.6%)	P
Age, years (\pm SD)	58 \pm 8	56 \pm 9	0.004
Waiting list, months, median (IQR)	4.0 (2.0-11.0)	3.0 (1.0-7.0)	0.0001
MELD, (\pm SD)	15 \pm 8	17 \pm 7	0.003
Child Pugh A/B/C, n (%)	78 (40.6)/79 (41.2)/36 (18.2)	67 (27.7) / 113 (46.7) / 62 (25.6)	0.01
Supplementary MELD points, n (%)	120 (62.2)	173 (71.5)	0.04
*Images at Listing			
Within Milan, n = 354 (%)	138 (38.9)	216 (61.1)	
Beyond Milan, within UCSF, n = 40 (%)	21 (52.5)	19 (47.5)	
Beyond UCSF, n = 41 (%)	34 (82.9)	7 (17.1)	0.0001
AFP, ng/mL, median (IQR)	15.6 (5.3-82.4)	13.7 (4.6-77.8)	0.60
AFP \leq 100 ng/mL, n = 330 (%)	145 (43.9)	185 (56.1)	
AFP 100-1,000 ng/mL, n = 79 (%)	31 (39.2)	48 (60.8)	
AFP > 1,000 ng/mL, n = 22 (%)	14 (63.6)	8 (36.4)	0.12
*Images at last evaluation			
Within Milan, n = 364 (%)	160 (43.9)	204 (56.1)	
Beyond Milan, within UCSF, n = 39 (%)	9 (23.1)	30 (76.9)	
Beyond UCSF, n = 31 (%)	23 (74.2)	8 (25.8)	0.0001
AFP, ng/mL, median (IQR)	14.7 (5.3-72.5)	12.5 (4.4-61.7)	0.51
AFP \leq 100 ng/mL, n = 336 (%)	148 (44.0)	188 (56.0)	
AFP 100-1,000 ng/mL, n = 70 (%)	30 (42.9)	40 (57.1)	
AFP > 1,000 ng/mL, n = 23 (%)	11 (47.8)	12 (52.2)	0.92
*Explanted Liver Features			
Within Milan, n (%)	117 (60.6)	160 (66.1)	0.23
Beyond Up-to 7, n (%)	45 (23.3)	32 (13.2)	0.006
Microvascular invasion, n (%)	44 (23.2)	52 (21.5)	0.67
Nuclear grade > II, n (%)	47 (31.1)	32 (13.9)	0.0001

Normal values: alpha-fetoprotein 0.6-4.4 ng/mL. AFP: alpha-fetoprotein. HCC: hepatocellular carcinoma.

Discordant imaging-explanted data was observed in 104 out of 354 patients (29.4%) (Table 4). Rates of discordance (Milan IN-Milan OUT) according to last imaging modality were as follows: CT alone 34.6% discordance, MRI alone 20.4% discordance and both methods MRI/CT 26.4% discordance ($P = 0.031$). Although no significant differences were observed regarding serum AFP cut-offs values between discordant and non-discordant HCC patients, discordant HCC presented higher proportion of patients beyond Up-to 7 and higher proportion of micro-vascular invasion and dedifferentiated tumors (Table 4). Regarding assessment of MC, pre-LT imaging data showed a sensitivity of 0.90, specificity of 0.65, accuracy of 0.77, positive Likelihood ratio of 2.57, and negative Likelihood ratio of 0.15, when compared with explanted liver findings (Table 5).

Main Overall Outcomes

Median follow-up in the overall cohort was 37.0 months (IQR 13.5-64.0 months). Patient survival and recurrence rates at 1, 3 and 5 years were 77.7%, 67.4% and 64.8% ($n = 153$ deaths) and 7.1%, 12.2% and 14.2% ($n = 62$ recurrences), respectively. The main causes of death were recurrent HCC 34.2% ($n = 50$) and sepsis 20.6% ($n = 30$). Median TTR was 13.0 months (IQR 6.0-28.5 months). Median survival following recurrence diagnosis was 6.0 months (IQR 3.0-14.0 months). Recurrence rates for patients meeting MC, and UCSF are shown on table 6.

Survival and recurrence rates according to UCSF and MC are shown on Figure 4A. Patients with discordant imaging-explanted data had lower 5-year survival HR 2.02 (CI 1.29; 3.15) and higher cumulative recurrence HR 2.34 (CI 1.24; 4.40) (Figure 4B). Patients who were exceeding Milan criteria at listing and were finally within Milan in the explanted liver ($n = 27$) had lower risk of recurrence when compared to those patients exceeding both Milan criteria at listing and in the explanted liver ($n = 54$) HR 0.23 (CI 0.06; 0.78). There was not a significant survival difference comparing iHCC and HCC (60.4% vs. 65%; $p = 0.34$); however, iHCC had higher proportion of non-HCC related deaths (88.2% vs. 59.3%; $p = 0.001$) and a lower 5-year recurrence rate when compared to previously known HCC (5.4% vs. 14.3%; $p = 0.048$) (Table 7).

Predicting recurrence risk with pre and post transplant criteria

Tables 6 A-B shows results from the Cox regression analysis regarding risk of recurrence including pre LT variables. In univariate analysis, patients exceeding Milan criteria had a 5-year risk of recurrence of 27.2% with a HR of 2.59 (CI 1.54; 4.36). Exceeding UCSF criteria showed the highest risk of recurrence with a crude HR of 3.81 (CI 2.12; 6.82). Dummies for AFP cut-off values showed that a serum AFP > 1,000 ng/mL presented 4 more times of recurrence risk in the overall cohort (HR 4.38; $p = 0.0001$). Adjusted HRs from the multivariate Cox regression model

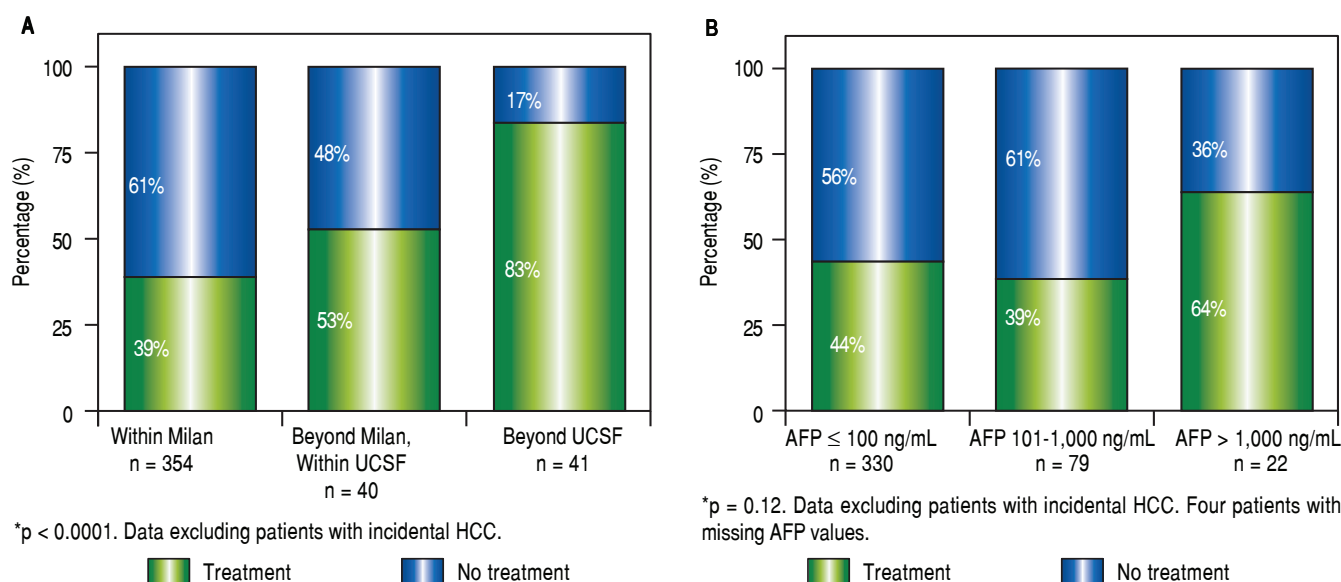


Figure 2. Proportion of patients receiving pre-transplantation locoregional tumor treatment considering imaging data (A) and serum AFP values at listing (B). Note: Locoregional treatment prior to LT was performed in 44% of cHCC patients; in 39% of cHCC within Milan, in 53% beyond Milan/within UCSF and in 83% exceeding UCSF ($P < 0.0001$). However, there was no significant difference in the proportion of patients receiving pre-LT locoregional treatment according to pre-LT AFP values (≤ 100 ng/mL 44%, 101-1,000 ng/mL 39%, and > 1,000 ng/mL 64%; $p = 0.12$).

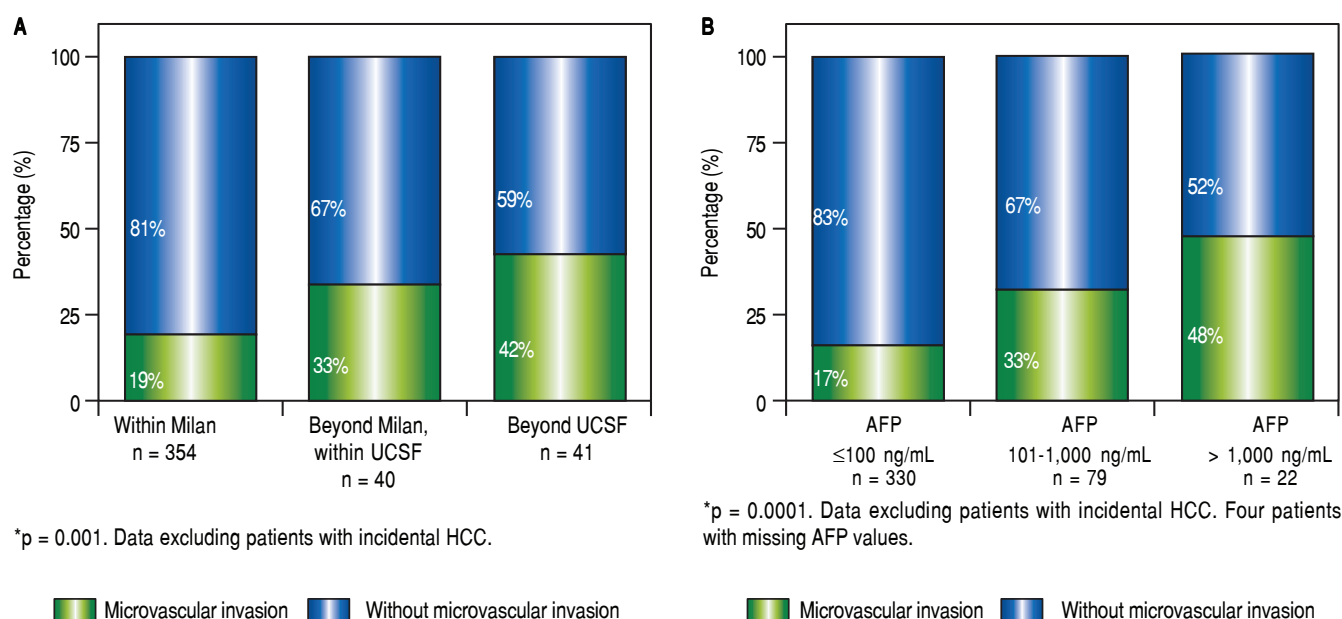


Figure 3. Presence of microvascular invasion in the explanted liver according to pre-transplant imaging (A) and serum AFP values at listing (B). Note: Increasing proportion of microvascular invasion was observed considering MC or extended criteria at listing and pre-LT serum AFP values.

Table 3. Relationship between AFP levels and Histopathologic features of hepatocellular carcinoma.

Explanted features	Serum AFP at Listing (ng/mL)			P
	AFP ≤ 100 (n = 415, 80.3%)	AFP 100-1000 (n = 79, 15.3%)	AFP >1000 (n = 23, 4.4%)	
Within Milan, n (%)	288 (69.4)	45 (57.0)	14 (60.9)	0.08
Beyond Up to 7, n (%)	60 (14.5)	15 (19.0)	7 (30.4)	0.04
Macrovascular invasion, n (%)	4 (1.1)	6 (9.1)	3 (15.8)	0.0001
Microvascular invasion, n (%)	73 (17.6)	26 (33.3)	10 (45.5)	0.0001
Nuclear grade > II, n (%)	57 (15.7)	29 (39.2)	9 (40.9)	0.0001

Normal Values: alpha-fetoprotein 0.6-4.4 ng/mL. AFP: alpha-fetoprotein.

Table 4. Comparative analysis according to discordant vs. non-discordant imaging-explanted liver data.

Variable	Discordant n = 104 (29.4%)	Non discordant n = 250 (70.6%)	P
Age, years (± SD)	56 ± 8	57 ± 9	0.85
Waiting list, months, median (IQR)	3.5 (1.0-8.0)	3.0 (1.0-9.0)	0.97
MELD, (± SD)	17 ± 7	16 ± 7	0.13
Child Pugh A/B/C, n (%)	31 (30)/44 (42)/29 (28)	79 (32)/116 (46)/54 (22)	0.46
Supplementary MELD points, n (%)	77 (74.0)	174 (69.6)	0.39
AFP ≤ 100 ng/mL, n (%)	76 (73.8)	199 (79.6)	0.24
AFP 100-1,000 ng/mL, n (%)	24 (23.3)	40 (16.0)	0.24
AFP > 1,000 ng/mL, n (%)	3 (2.9)	11 (4.4)	0.24
*Explanted Liver Features			
Beyond Up-to 7, n (%)	44 (42.3)	0 (0)	<0.0001
Microvascular invasion, n (%)	37 (35.6)	29 (11.7)	<0.0001
Nuclear grade >II, n (%)	25 (26.3)	34 (15.7)	0.032

Normal Values: alpha-fetoprotein 0.6-4.4 ng/mL. AFP: alpha-fetoprotein. HCC: hepatocellular carcinoma.

Table 5. Precision of Images vs. explanted liver findings.

Criteria at imaging	Explanted liver findings	
	Within Milan n (%)	Exceeding Milan n (%)
Within Milan (n = 354)	250 (70.6)	104 (29.4)
Exceeding Milan (n = 81)	27 (33.3) 277 (63.7)	54 (66.7) 158 (36.3)

Overall imaging data before transplantation when compared with explanted liver findings showed Sensitivity of 0.90, Specificity of 0.65, Accuracy of 0.77, positive Likelihood ratio of 2.57, and negative Likelihood ratio of 0.15.

showed that AFP > 1,000 ng/mL at listing was independently associated with 5-year HCC recurrence with an adjusted HR of 3.24 (CI 1.52; 6.91) (Table 6, Panel B). In the Cox regression model, the adjusted HR for treatment before LT was not independently associated with 5-year recurrence.

A second Cox regression model including post-transplant data showed that microvascular invasion decreased survival for each stratum assessed in the explanted liver (Table 8). According to explanted liver data, patients exceeding Milan criteria within Up-to 7 and without microvascular invasion had similar 5-year recurrence rate

Table 6.

A. Pre transplant variables associated with 5-year HCC recurrence after liver transplantation. Univariate Cox regression.

Variable	5-year incidence of recurrence, (%)	Hazard Ratio (95% CI)	P
WL time < 3 months, Yes (n = 305) No (n = 191)	12.1 14.7	0.84 (0.52; 1.38) 1.18 (0.73; 1.94)	0.97
Underlying liver disease Hepatitis C virus (n = 177) Hepatitis B virus (n = 94)	15.8 9.9	1.29 (0.79; 2.10) 0.84 (0.46; 1.55)	0.29 0.58
Treatment before LT Yes (n = 193) No (n = 242)	19.2 10.3	1.88 (1.13; 3.12) 0.53 (0.32; 0.88)	0.015
Milan criteria at listing Within (n = 354) Exceeding (n = 81)	16.1 30.3	0.38 (0.23; 0.65) 2.59 (1.54; 4.36)	0.0001
UCSF criteria at listing Within (n = 394) Exceeding (n = 41)	17.8 45.5	0.26 (0.15; 0.47) 3.81 (2.12; 6.82)	0.0001
AFP level at listing, ng/mL ≤ 100 (n = 330)* 101-1,000 (n = 79) > 1,000 (n = 22)	16.5 28.1 48.1	- 1.82 (0.96; 3.44) 4.38 (2.10; 9.09)	- 0.06 0.0001

Normal Values: alpha-fetoprotein 0.6-4.4 ng/mL. AFP: alpha-fetoprotein. HCC: hepatocellular carcinoma. LT: liver transplantation. UCSF: University of California San Francisco. WL: waiting list. *AFP baseline reference level for dummies.

B. Multivariate Cox Regression Analysis of Pre-Transplant Risk factors associated with 5-year Hepatocellular carcinoma Recurrence and Competing Risk Analysis - Confidence Intervals.

Variable	HR (CI 95%)	P	SHR (CI 95%)	P
Treatment before LT	1.43 (0.83; 2.46)	0.20	-	0.20
Milan Criteria at listing ^a	0.78 (0.33; 1.86)	0.58	0.68 (0.28; 1.62)	0.58
UCSF Criteria at listing ^a	0.36 (0.14; 0.98)	0.046	0.45 (0.17; 1.15)	0.09
AFP level at listing, ng/mL ≤100* 101-1,000 > 1,000	- 1.92 (1.01; 3.64) 3.24 (1.52; 6.91)	- 0.045 0.002	- 1.60 (0.85; 3.03) 3.31 (1.59; 6.89)	- 0.14 0.001

^a Assessed by Imaging criteria. *AFP baseline reference level for dummies. HR: Hazard ratio. SHR: subhazard ratio. Schoenfeld's residual test, proportional hazard assumption $p = 0.43$. Harrel's concordance statistic 0.62. Competing risk analysis (SHR) was considered: competing event, death.

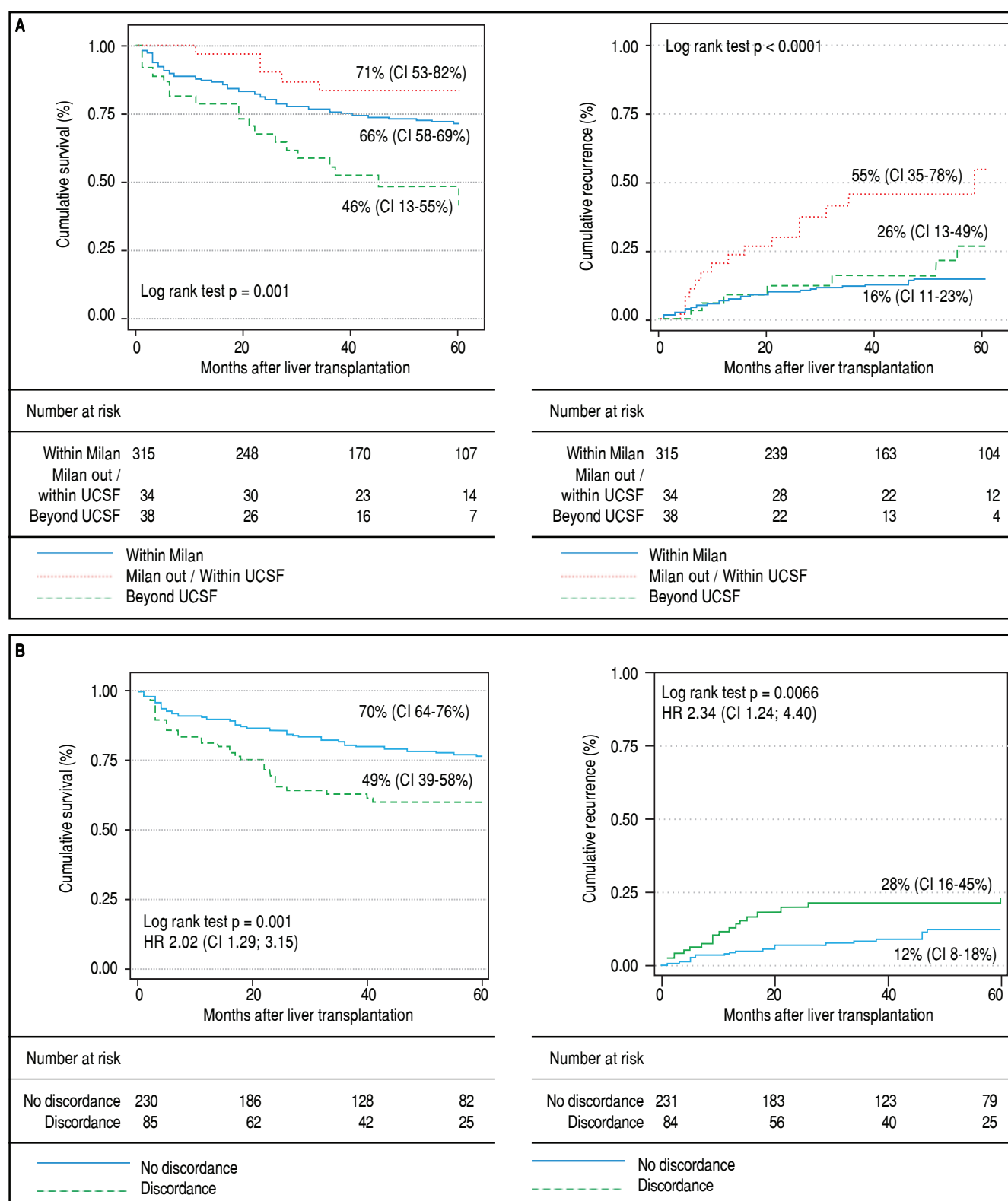


Figure 4. Tumor recurrence and patient survival rates according to Milan or University of California San Francisco criteria (**A**) and discordant versus non-discordant imaging-explanted data (**B**) (Kaplan Meier; log Rank test). Note: Survival was not significantly different between patients within Milan and within UCSF criteria at listing; patients beyond UCSF had higher mortality survival rate with a HR of 1.70 (CI 1.08-2.67; $p = 0.03$). Patients with discordant imaging-explanted data had lower survival and higher recurrence rates. Data excluding patients with incidental HCC.

when compared to patients within MC in the explanted liver (HR 0.91; CI 0.32-2.62). Patients exceeding Up-to 7 criteria without microvascular invasion had higher risk of recurrence with a HR of 2.98 (CI 1.39-6.39) when compared to patients within MC; and lower risk than those patients either within or exceeding Up-to 7 criteria with microvascular invasion with corresponding HR of 6.45 (CI 2.79-14.88) and 12.71 (CI 7.11-22.71). Survival decreased significantly for patients beyond Up-to criteria and with the presence of microvascular invasion for each stratum.

DISCUSSION

This is the largest multicenter cohort to describe the selection criteria, treatment during waiting list and overall results of LT for HCC in Latin America. First, in this cohort, most of the LT centers transplanted patients within MC at listing. Overall survival and recurrence rates were similar than that reported in other multicenter European or North American studies.^{1,2,21} Second, pre-transplant tumor treatment was most frequently done according to imaging rather than serum AFP values at listing, although serum AFP values correlated with presence of microvascular invasion, poor survival and higher recurrence rates.

Discordant imaging-explanted data was observed in 29%, showing lower survival and higher recurrence rates in discordant patients. Finally, AFP > 1,000 ng/mL at listing was independently associated with 5-year recurrence.

Different series have been published related to LT and for HCC in Latin America.^{8-17,24,25} A wide range of recurrence rates has been previously reported in this region.⁸⁻¹⁷ Participating centers included those with the highest number of procedures in each country, as previously shown.⁷ Although data from Cuba, Ecuador, Costa Rica, Dominican Republic, Venezuela and Panama are lacking; the number of transplants in these countries is very small.⁷ Consequently, in this study regional data of LT for HCC are very well represented.

Recently published data confirmed that there might be other related factors beyond tumor size and number associated with worse tumor biology and higher recurrence rate.²⁶⁻²⁸ Moreover, discordant pre-transplant imaging together with the explanted liver findings in some series was higher than 30%.^{26,27} In addition, we found that discordant patients presented worst outcomes in terms of survival and recurrence. Consequently, there is a need to refine selection criteria of patients undergoing LT for HCC when considering imaging data only. While tumor differentiation and microvascular invasion potentially can be can be

Table 7. Comparative analysis between previously known and incidental HCC.

Variable	Incidental HCC n = 92	Previously known HCC n = 435	P
Age, years (\pm SD)	58 \pm 9	57 \pm 9	0.92
Gender, Male, n (%)	75 (81.5)	356 (81.8)	0.94
Waiting list time, months, median (IQR)	2.0 (0.0-12.0)	3.0 (1.0-9.0)	0.70
Waiting list time			
\leq 3 months, n (%)	44 (55.7)	261 (62.6)	0.004
3-6 months, n (%)	5 (6.3)	63 (15.1)	0.004
> 6 months, n (%)	30 (38.0)	93 (22.3)	0.03
MELD (\pm SD)*	20 \pm 8	16 \pm 7	0.0001
AFP level at listing, ng/mL			
\leq 100 ng/mL, n (%)	85 (98.8)	330 (76.6)	0.0001
101-1,000 ng/mL, n (%)	0 (0)	79 (18.3)	0.0001
> 1,000 ng/mL, n (%)	1 (1.2)	22 (5.1)	0.0001
Explanted liver features			
Tumor number, median (IQR)	1.0 (1.0-2.0)	2.0 (1.0-3.0)	0.15
Major nodule diameter, cm, median (IQR)	1.7 (1.2-2.4)	3.0 (2.2-4.0)	0.0001
Within Milan, n (%)	76 (82.6)	277 (63.7)	0.0001
Within Up-to 7, n (%)	85 (92.4)	358 (82.3)	0.016
Microvascular invasion, n (%)	17 (18.5)	96 (22.2)	0.43
Macrovascular invasion, n (%)	2 (2.4)	12 (3.2)	0.52
Nuclear grade >II, n (%)	17 (19.8)	79 (20.7)	0.85
Major nodule necrosis			
Partial necrosis, n (%)	5 (5.4)	80 (18.5)	0.0001
Complete necrosis, n (%)	1 (1.1)	31 (7.2)	0.0001

AFP: alpha-fetoprotein. MELD: Model for End stage Liver Disease.

Table 8.

A. Explanted liver and post-transplant variables associated with 5-year HCC recurrence after liver transplantation. Univariate Cox regression.				
Variable	5-year incidence of recurrence, (%)	Hazard Ratio (95% CI)		P
Incidental HCC				
Yes (n = 92)	5.4	0.39 (0.16; 0.99)		0.048
No (n = 435)	14.3	2.51 (1.01; 6.23)		
Milan criteria				
Within (n = 353)	11.1	0.25 (0.15; 0.41)		0.0001
Exceeding (n = 174)	36.8	4.02 (2.46; 6.58)		
Up-to 7 criteria				
Within (n = 443)	13.5	0.18 (0.11; 0.29)		0.0001
Exceeding (n = 84)	47.8	5.46 (3.34; 8.78)		
Microvascular invasion				
Presence (n = 113)	31.9	5.42 (3.35; 8.78)		0.0001
Absence (n = 411)	7.5	0.18 (0.11; 0.29)		
Nuclear grade > II				
Presence (n = 96)	19.8	2.23 (1.29; 3.86)		0.004
Absence (n = 372)	11.0	0.45 (0.26; 0.77)		
B. Multivariate Cox Regression Analysis of Explanted Liver Risk factors associated with 5-year Hepatocellular carcinoma Re- currence and Bootstrapped bias corrected - Confidence Intervals.				
Variable	β	HR (CI 95%)	Bootstrapping CI 95%	P
Up to 7 criteria ^b	-0.804	0.45 (0.22; 0.91)	0.20; 0.86	0.027
Microvascular invasion ^b	1.397	4.04 (2.39; 6.85)	2.42; 6.92	0.0001
Nuclear grade >II ^b	0.610	1.84 (1.05; 3.22)	1.04; 3.20	0.031

HCC: hepatocellular carcinoma. MMF: sodium/mophetil micophenolate. mTOR: mammalian target of Rapamycin inhibitors. **Immunosuppression at the 3rd month after transplant (patients dead were not included). ^b Assessed by explanted liver features. β coefficient.

assessed by a tumor biopsy prior to transplantation, the risk of tumor seeding and biopsy complications generate a safety limit.^{26,27}

Pre transplant AFP is a renewed biological marker in clinical practice,^{5,29,30} although application of this marker for organ allocation policies in Latin America has not been systematically implemented. In this study, elevated serum AFP was associated with higher recurrence and lower survival and correlated with known pathological risk factors, suggesting a more aggressive tumor. More recently, another extended criteria has been proposed in a large HBV-related HCC cohort from China including different cut-offs of AFP.³¹ In the United States, some changes in the UNOS allocation policy have been agreed upon eligible candidates for a standardized MELD exception including AFP values.

Time on waiting list has been reported as a poor prognostic factor,³² considering the pre-transplant period as a key tool for tumor biology observation. However, other authors have not observed this finding comparing wait

time of less than 180 days.³³ Probably, time on the wait list might be a potential confounder factor. Time on the waiting list has many caveats, including treatment before transplantation; number and diameter of tumor nodules, serum AFP values; and moreover, regional differences related to donor scarcity and organ allocation policies. Although, locoregional treatment before transplant was associated with a double risk of recurrence, patients who were treated exceeded MC at listing more frequently, showing that this data should be cautiously interpreted (potential confounder factor). A crucial finding was that regarding clinical decision-making, locoregional tumor treatment was performed mainly considering imaging data rather than serum AFP values. This biological marker should be taken in consideration when deciding to treat or not treat patients during the wait list.

We recognize that this study has limitations including first, that in cohort studies with no control group, prognostic factors might be biased. In addition, different pre and post LT treatment algorithms in different LT centers

in this region could have led to a potential selection bias. However, a strict revision of the data was centrally requested, and investigators who performed the final analysis did not participate in the data collection to avoid differential outcome assessment on exposure. A complete follow-up and outcome assessment was available for all patients included. Second, imaging re-evaluation after local/regional treatment was not centrally reviewed; reason for which we only evaluated pre transplant data at time of listing, and additionally at most recent evaluation in treated patients. Third, prognosis, progression and delisting while on the waitlist for all the patients with HCC who were listed for LT were not considered in this study. Unfortunately, our original clinical question of this large registry did not include evaluation of mortality or delisting while on the waitlist. However, we consider that these are key points to address in the coming years in Latin America.

In conclusion, in the largest multicenter Latin American cohort so far published we observed that the majority of LT centers considered Milan criteria as the gold standard for transplantation. However, treatment during transplant waiting list was considered predominantly by imaging rather than serum AFP values at listing. From a regional perspective, this clinical-decision making should be reviewed in the daily practice, as serum AFP predicts recurrence and survival independently from imaging data.

ABBREVIATIONS

- **AFP:** alpha-fetoprotein.
- **chHCC:** previously known HCC or diagnosed before LT.
- **CI:** confidence interval.
- **CT:** computerized tomography.
- **HCC:** hepatocellular carcinoma.
- **HR:** hazard ratio.
- **HV:** high volume center.
- **iHCC:** incidental HCC.
- **IQR:** interquartile range.
- **LT:** liver transplantation.
- **MC:** Milan criteria.
- **MELD:** Model for End-stage Liver Disease.
- **MRI:** magnetic resonance imaging.
- **MVI:** microvascular invasion.
- **NAFL:** Non-Alcoholic Fatty Liver.
- **PEI:** Percutaneous ethanol injection.
- **RFA:** radiofrequency ablation.
- **TACE:** trans-arterial chemoembolization.
- **TTR:** time to recurrence.
- **WL:** waiting list.

FINANCIAL SUPPORT

This research received no specific grant from any funding agency in the public, commercial, or non-profit sectors.

CONFLICTS OF INTEREST AND DISCLOSURES

The authors of this manuscript have no conflicts of interest to disclose as described by Annals of Hepatology.

ACKNOWLEDGMENTS

We thank C Podesta (native English speaker) for her assistance with editing of this paper. Argentina: Oscar Andriani, Eduardo de Santibañes, Octavio Gil, Martín Barrabino, Martín Maraschio. Brazil: Elaine Cristina de Ataide, Ana Carolina Portugal. Chile: Juan Carlos Díaz, Cristian Montenegro, Jose Ibarra, Nicolas Jarufe. Colombia: Juan Carlos Restrepo, Isabel Arenas Hoyos, Luisa Santos, and Martín Garzón. Peru: Carlos Rondon, Jose Chaman. Uruguay: Solange Gerona.

REFERENCES

1. Adam R, Karam V, Delvart V, O'Grady J, Mirza D, Klempnauer J, Castaing D, et al. Evolution of indications and results of liver transplantation in Europe. A report from the European Liver Transplant Registry (ELTR). *J Hepatol* 2012; 57: 675-88.
2. Thuluvath PJ, Guidinger MK, Fung JJ, Johnson LB, Rayhill SC, Pelletier SJ. Liver Transplantation in the United States, 1999-2008. *Am J Transplant* 2010; 10: 1003-19.
3. Mazzaferro VV, Regalia EE, Doci RR, Andreola SS, Pulvirenti AA, Bozzetti FF, Montalto MM, et al. Liver transplantation for the treatment of small hepatocellular carcinomas in patients with cirrhosis. *N Engl J Med* 1996; 334: 693-9.
4. Yao FY, Ferrell L, Bass NM, Watson JJ, Bacchetti P, Venook A, Ascher NL, et al. Liver transplantation for hepatocellular carcinoma: expansion of the tumor size limits does not adversely impact survival. *Hepatology* 2001; 33: 1394-403.
5. Duvoux C, Thoraval FR, Decaens T, Pessione F, Badran H, Piardi T, Francoz C, et al. Liver Transplantation for Hepatocellular Carcinoma: A Model Including α -Fetoprotein Improves the Performance of Milan Criteria. *Gastroenterology* 2012; 143: 986-94.
6. Toso C, Asthana S, Bigam DL, Shapiro AMJ, Kneteman NM. Reassessing selection criteria prior to liver transplantation for hepatocellular carcinoma utilizing the scientific registry of transplant recipients database. *Hepatology* 2008; 49: 832-8.
7. Salvalaggio PR, Caicedo JC, de Albuquerque LC, Contreras A, Garcia VD, Felga GE, Maurette R, et al. Liver Transplantation in Latin America. *Transplantation* 2014; 98: 241-6.
8. Piñero F, Marciano S, Anders M, Orozco Ganem F, Zerega A, Cagliani J, Andriani O, et al. Identifying patients at higher risk of hepatocellular carcinoma recurrence after liver transplantation in a multicenter cohort study from Argentina. *Eur J Gastroenterol Hepatol* 2016; 28: 421-7.

9. Piñero F, Marciano S, Anders M, Orozco F, Zerega A, Cabrera CR, Tisi Baña M, et al. Screening for liver cancer during transplant waiting list. *Eur J Gastroenterol Hepatol* 2015; 27: 355-60.
10. Piñero F, Mendizabal M, Casciato P, Galdame O, Quiros R, Bandi J, Mullen E, et al. Is recurrence rate of incidental hepatocellular carcinoma after liver transplantation similar to previously known HCC? Towards a predictive recurrence score. *Ann Hepatol* 2014; 13: 211-8.
11. Gabrielli M, Vivanco M, Hepp J, Martínez J, Pérez R, Guerra J, Arrese M, et al. Liver Transplantation Results for Hepatocellular Carcinoma in Chile. *TPS* 2015; 42: 299-301.
12. Hoyos S, Escobar J, Cardona D, Guzmán C, Mena Á, Osorio G, Pérez C, et al. Factors associated with recurrence and survival in liver transplant patients with HCC—a single center retrospective study. *Ann Hepatol* 2015; 14: 58-63.
13. Costa PEG, Vasconcelos JBM, Coelho GR, Barros MAP, Neto BAF, Pinto DSR, Júnior JTV, et al. Ten-Year Experience With Liver Transplantation for Hepatocellular Carcinoma in a Federal University Hospital in the Northeast of Brazil. *TPS* 2014; 46: 1794-8.
14. de Ataíde EC, Garcia M, Mattosinho TJAP, Almeida JRS, Escanhoela CAF, Boin IFSF. Predicting Survival After Liver Transplantation Using Up-to-Seven Criteria in Patients With Hepatocellular Carcinoma. *TPS* 2012; 44: 2438-40.
15. Teixeira AC, Mente D, Castro-e-Silva O, Sankarankutty AK, Cantão CA, Souza FF, Abud D, et al. Treatment of Hepatocellular Carcinoma With Liver Transplantation: A Single-Center Experience From Brazil. *TPS* 2010; 42: 502-4.
16. Piñero F, Campaña AG, Mendizabal M, Fauda M, Rowe C, Raffa P, Barreiro M, et al. Domino liver graft with hepatocellular carcinoma used as bridge therapy for a patient with acute liver failure: A case report. *Liver Transpl* 2014; 20(3): 387-7.
17. Piñero F, Tisi Baña M, de Ataíde EC, Hoyos Duque S, Marciano S, Varón A, Anders M, et al. Liver Transplantation for Hepatocellular carcinoma: Evaluation of the AFP model in a multicenter cohort from Latin America. *Liver Int* 2016; 36: 1657-67.
18. Liver EAFTSOT, Cancer EOFRATO. EASL-EORTC Clinical Practice Guidelines: Management of hepatocellular carcinoma. *J Hepatol* 2012; 56: 908-43.
19. Yao FY, Breitenstein S, Broelsch CE, Dufour J-F, Sherman M. Does a patient qualify for liver transplantation after the down-staging of hepatocellular carcinoma? *Liver Transpl* 2011; 17: S109-S116.
20. Villanueva A, Hoshida Y, Battiston C, Tovar V, Sia D, Alsinet C, Cornella H, et al. Combining Clinical, Pathology, and Gene Expression Data to Predict Recurrence of Hepatocellular Carcinoma. *Gastroenterology* 2011; 140: 1501-12.
21. Mazzaferro V, Llovet JM, Miceli R, Bhoori S, Schiavo M, Mariani L, Camerini T, et al. Predicting survival after liver transplantation in patients with hepatocellular carcinoma beyond the Milan criteria: a retrospective, exploratory analysis. *Lancet Oncology* 2009; 10: 35-43.
22. Kneteman N, Livraghi T, Madoff D, de Santibañez E, Kew M. Tools for monitoring patients with hepatocellular carcinoma on the waiting list and after liver transplantation. *Liver Transpl* 2011; 17: S117-S127.
23. Elm von E, Altman DG, Egger M, Pocock SJ, Gøtzsche PC, Vandenbroucke JP. The Strengthening the Reporting of Observational Studies in Epidemiology (STROBE) statement: guidelines for reporting observational studies. *Lancet* 2007; 370: 1453-7.
24. Salvalaggio PR, Felga G, Axelrod DA, Guardia Della B, Almeida MD, Rezende MB. List and Liver Transplant Survival According to Waiting Time in Patients With Hepatocellular Carcinoma. *Am J Transplant* 2015; 15: 668-77.
25. Gruz F, Cleres M, Raffa S and Yantorno S. Hepatocarcinoma dentro y fuera de los criterios de Milán: Resultados de un centro de trasplante hepático en la Argentina. *Acta Gastroenterológica Latinoamericana* 2013; 43: 106-12.
26. Decaens T, Roudot-Thoraval F, Badran H, Wolf P, Durand F, Adam R, Boillot O, et al. Impact of tumour differentiation to select patients before liver transplantation for hepatocellular carcinoma. *Liv Internat* 2011; 31: 792-801.
27. Sapisochin G, Goldaracena N, Laurence JM, Dib M, Barbas A, Ghanekar A, Clearly SP, et al. The extended Toronto criteria for liver transplantation in patients with hepatocellular carcinoma: A prospective validation study. *Hepatology* 2016; Epub ahead of print.
28. Chaiterakij R, Zhang X, Addissie BD, Mohamed EA, Harmisen WS, Theobald PJ, Peters BE, et al. Combinations of biomarkers and Milan criteria for predicting hepatocellular carcinoma recurrence after liver transplantation. *Liver Transpl* 2015; 21: 599-606.
29. Toso C, Dupuis-Lozeron E, Majno P, Berney T, Kneteman NM, Perneger T, Morel P, et al. A model for dropout assessment of candidates with or without hepatocellular carcinoma on a common liver transplant waiting list. *Hepatology* 2012; 56: 149-56.
30. Hameed B, Mehta N, Sapisochin G, Roberts JP, Yao FY. Alpha-fetoprotein level? >1000 ng/mL as an exclusion criterion for liver transplantation in patients with hepatocellular carcinoma meeting the Milan criteria. *Liver Transpl* 2014; 20: 945-51.
31. Xu X, Lu D, Ling Q, Wei X, Wu J, Zhou L, Yan S, et al. Liver transplantation for hepatocellular carcinoma beyond the Milan criteria. *Gut* 2015; 65: 1035-41.
32. Samoylova ML, Dodge JL, Yao FY, Roberts JP. Time to transplantation as a predictor of hepatocellular carcinoma recurrence after liver transplantation. *Liver Transpl* 2014; 20: 937-44.
33. Palmer WC, Lee D, Burns J, Croome K, Rosser B, Patel T, Keaveny AP. Liver transplantation for hepatocellular carcinoma: impact of wait time at a single center. *Ann Hepatol* 2017; 16(3): 402-11.

Correspondence and reprint request:

Federico Piñero, M.D.

Hepatology and Liver Transplant Unit, Hospital Universitario Austral

Av. Presidente Perón 1500, (B1629HJ) Pilar, Buenos Aires, Argentina.

Tel.: +54 0230 448 2000. Fax: +54 0230 448 2236

E-mail: fpinero@cas.austral.edu.ar