





[Get Access](#)[Share](#)[Export](#)

Neurobiology of Disease

Volume 108, December 2017, Pages 13-28

Early ciliary and prominin-1 dysfunctions precede neurogenesis impairment in a mouse model of type 2 diabetes

Tomás P. Bachor ^a, Jana Karbanová ^b, Edgar Büttner ^b, Vicente Bermúdez ^{a, b}, Melisa Marquioni-Ramella ^a, Peter Carmeliet ^{c, d}, Denis Corbeil ^b  , Angela M. Suburo ^a  

[Show more](#) 

<https://doi.org/10.1016/j.nbd.2017.07.010>

[Get rights and content](#)

Highlights

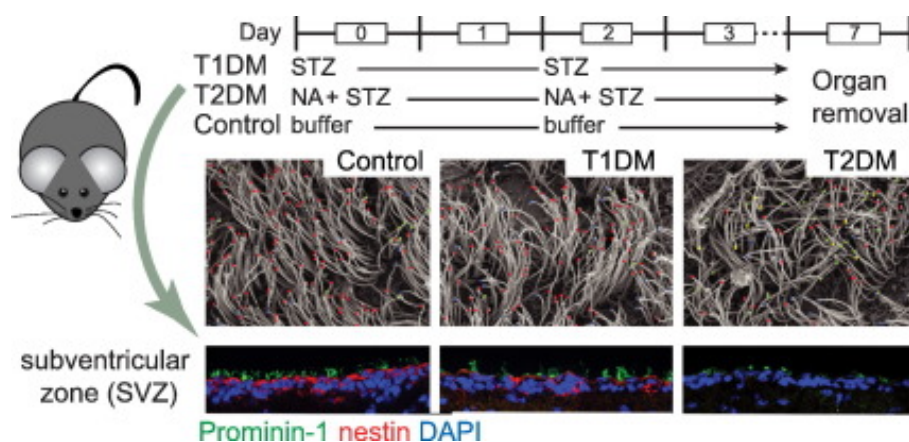
- Ependymal cilia are disorganized in type 2, but not in type 1, diabetic mice.
- Cilia disorganization is concomitant with a delocalization of prominin-1.
- Neurogenesis impairment followed ciliary dysfunction.
- Type 2 diabetes induced ectopic migration of neuroblasts.

Abstract



Surprisingly, only **T2DM** mice showed SVZ damage. The initial lesions were localized to ependymal **cilia**, which appeared disorientated and clumped together. In addition, they showed delocalization of the ciliary **membrane protein** prominin-1. Impairment of neuroprogenitor proliferation, neurogenic marker abnormalities and ectopic migration of **neuroblasts** were found at a later stage. To our knowledge, our data describe for the first time such an early impact of T2DM on the SVZ. This is consistent with clinical data indicating that brain damage in T2DM patients differs from that in **T1DM** patients.

Graphical abstract



[Download : Download high-res image \(432KB\)](#)

[Download : Download full-size image](#)

[<](#) Previous

Next [>](#)

Abbreviations

AUC, area under the curve; CSD, circular standard deviation; CSF, cerebrospinal fluid; CLSM, confocal laser scanning microscope; DCX, doublecortin; DM, Diabetes mellitus; Glut, glucose transporter; GFAP, glial fibrillary acidic protein; IPGTT, intraperitoneal glucose tolerance test; NA, nicotinamide; RMS, rostral migratory stream; SEM, scanning electron microscopy; STZ, streptozotocin; SVZ, subventricular zone; T1DM, type 1 diabetes-like; T2DM, type 2 diabetes-like

[Get Access](#)[Share](#)[Export](#)[Recommended articles](#)[Citing articles \(6\)](#)[View full text](#)

© 2017 Elsevier Inc. All rights reserved.

**ELSEVIER**[About ScienceDirect](#)[Remote access](#)[Shopping cart](#)[Advertise](#)[Contact and support](#)[Terms and conditions](#)[Privacy policy](#)

We use cookies to help provide and enhance our service and tailor content and ads. By continuing you agree to the **use of cookies**.

Copyright © 2020 Elsevier B.V. or its licensors or contributors. ScienceDirect® is a registered trademark of Elsevier B.V.

ScienceDirect® is a registered trademark of Elsevier B.V.